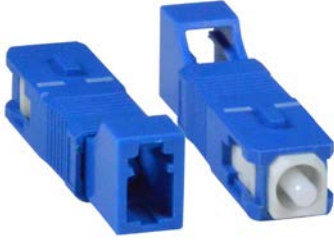


Fiber Optic Connector Adapters

www.vpi.us/c/fiber-optic-connector-adapters-398

LC Female to SC Male Simplex Singlemode Fiber Optic Adapter



FIBER-AD-SS-LCFSCM

- Female LC to male SC simplex 9/125-micron singlemode hybrid fiber optic adapter.
- Low insertion loss.
- Plastic body provides a lightweight, yet durable, solution.
- Ceramic ferrules for long-lasting reliability and precision.
- Included connector covers keep out dust and contaminants.

ST-SC Simplex Singlemode Fiber Optic Adapter, Female to Male



FIBER-AD-SS-STFSCM

- ST-SC female-to-male simplex fiber converter.
- Compact design.
- Easy to handle.
- High corrosion resistance.
- RoHS compliant.

ST Female to LC Male Simplex Multimode Fiber Optic Adapter



FIBER-AD-SM-STFLCM

- ST-LC female-to-male simplex fiber converter.
- Compact design.
- Easy to handle.
- High corrosion resistance.
- RoHS compliant.

SC-LC Simplex Singlemode Fiber Optic Adapter, Female to Male



FIBER-AD-SS-SCFLCM

- SC female to LC male simplex fiber converter.
- Compact design.
- Easy to handle.
- High corrosion resistance.
- RoHS compliant.